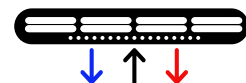


# 1 WAY CASSETTE CEILING FAN COIL UNIT



- Thin line design makes it possible to install in ceilings with limited space
- Modern design to fit decor
- Remote control for individual unit control
- Auto-swing foil creates a wide range of airflow options
- Efficient and whisper-quiet operation
- High-lift condensation drain pump
- Fresh air intake to easily integrate ventilation

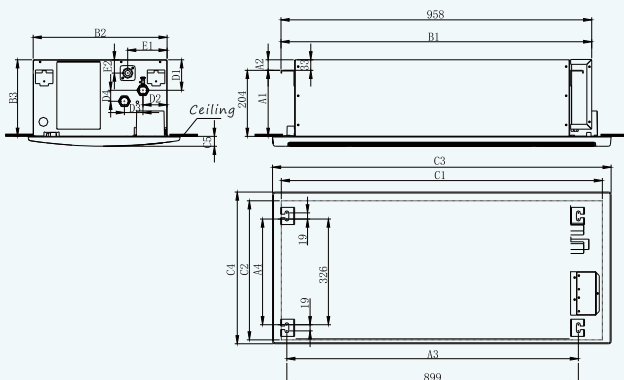


## 1-Way Cassette Ceiling Fan Coil Unit

Water valve is used to control the on/off water flowing to the unit, we installed the valve into the unit, so the user do not need to installed it by themself.

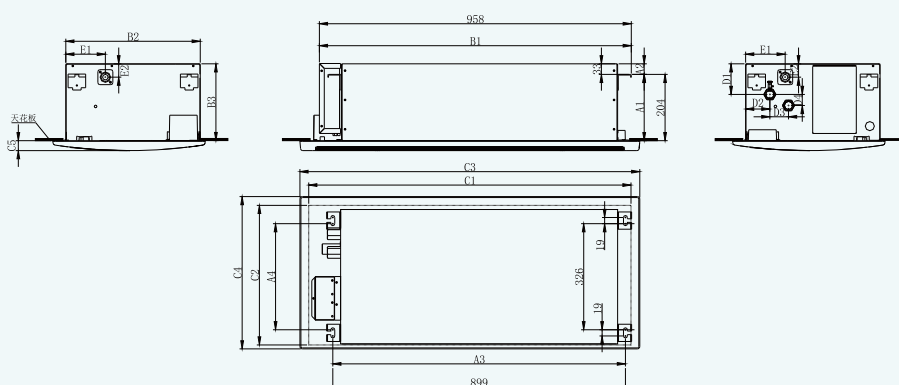
### ▶ Installing dimension

#### Left side water connection

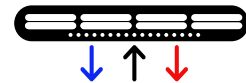


Model	Annotation	Units	MFP-34KIM-Q2A1
			MFP-51KIM-Q2A1
			MFP-68KIM-Q2A1
			MFP-85KIM-Q2A1
distance from hook to ceiling	A1	(mm)	205-210
distance from hook to top of unit	A2	(mm)	31
hooks distance 1	A3	(mm)	899
hooks distance 2	A4	(mm)	326
length of unit	B1	(mm)	958
width of unit	B2	(mm)	413
thickness of unit	B3	(mm)	236
length of opening of ceiling	C1	(mm)	990
width of opening of ceiling	C2	(mm)	426
length of panel	C3	(mm)	1044
width of panel	C4	(mm)	468
thickness of panel	C5	(mm)	31
water pipe position 1	D1	(mm)	94
water pipe position 2	D2	(mm)	74
water pipe position 3	D3	(mm)	57
water pipe position 4	D4	(mm)	34
water drained pipe position 1	E1	(mm)	122
water drained pipe position 2	E2	(mm)	41

#### Right side water connection



Model	Annotation	Units	MFP-34KIM-Q2A1
			MFP-51KIM-Q2A1
			MFP-68KIM-Q2A1
			MFP-85KIM-Q2A1
distance from hook to ceiling	A1	(mm)	205-210
distance from hook to top of unit	A2	(mm)	31
hooks distance 1	A3	(mm)	899
hooks distance 2	A4	(mm)	326
length of unit	B1	(mm)	958
width of unit	B2	(mm)	413
thickness of unit	B3	(mm)	236
length of opening of ceiling	C1	(mm)	990
width of opening of ceiling	C2	(mm)	426
length of panel	C3	(mm)	1044
width of panel	C4	(mm)	468
thickness of panel	C5	(mm)	31
water pipe position 1	D1	(mm)	80
water pipe position 2	D2	(mm)	116
water pipe position 3	D3	(mm)	26
water pipe position 4	D4	(mm)	61
water drained pipe position 1	E1	(mm)	122
water drained pipe position 2	E2	(mm)	41



## 1-Way Cassette Ceiling Fan Coil Unit

Model ( 2 -tube system)				MFP-34K1M-Q1AA1	MFP-51K1M-Q1AA1	MFP-68K1M-Q1AA1	MFP-85K1M-Q1AA1
Model of unit				MFP-34K1M-Q1A1	MFP-51K1M-Q1A1	MFP-68K1M-Q1A1	MFP-85K1M-Q1A1
Panel Type				MB-SA11A1			
Power supply				220V,50Hz,1Ph			
Air volume	H	m <sup>3</sup> /h		340	510	680	850
	M			280	380	515	660
	L			180	260	340	430
Static pressure			Pa	0	0	0	0
Cooling capacity	TH	H	W	1800	2700	3600	4500
			BTU/h	6142	9212	12283	15354
			W	1300	1970	2700	3185
	SH	M	BTU/h	4436	6722	9212	10867
			W	1500	2460	3000	3715
			W	1000	1555	1995	2420
TH	L	W	1390	2057	2479	2920	
		W	823	1200	1530	1825	
Heating capacity	H	W	2700	4050	5400	6750	
	M	W	1950	2770	3935	4900	
	L	W	1290	1774	2800	3505	
Noise		High speed	dB(A)	43	45	46	47
Power input		High speed	W	37	50	62	73
Waterflow volume		High speed	m <sup>3</sup> /h	0.31	0.46	0.62	0.77
Pressure dropping			kPa	16	18	20	22
Water tube connection(inlet)				ZG3/4"	ZG3/4"	ZG3/4"	ZG3/4"
Water tube connection(outlet)				ZG3/4"	ZG3/4"	ZG3/4"	ZG3/4"
Coil			Type	Hydrophilic aluminum fin to wear copper tube			
Max.working pressure			MPa	1.6	1.6	1.6	1.6
Condensing water pipe			mm	φ 26	φ 26	φ 26	φ 26
Net dimension	Unit	L x W x H	mm	958 x 413 x 236			
	Panel			1044 x 468 x 31			
Net weight	Unit	kg		19.4	19.4	20.5	20.5
	Panel	kg		4			

1-way cassette FCU performance  
( 2 tube system )

Model(4-tube system)				MFP-34K1M4-Q1AA1	MFP-51K1M4-Q1AA1	MFP-68K1M4-Q1AA1	MFP-85K1M4-Q1AA1
Model of unit				MFP-34K1M4-Q1A1	MFP-51K1M4-Q1A1	MFP-68K1M4-Q1A1	MFP-85K1M4-Q1A1
Panel Type				MB-SA11A1			
Power supply				220V,50Hz,1Ph			
Air volume	H	m <sup>3</sup> /h		340	510	680	850
	M			280	380	515	660
	L			180	260	340	430
Static pressure			Pa	0	0	0	0
Cooling capacity	TH	H	W	1350	2030	2700	3380
			BTU/h	4606	6926	9212	11533
			W	1000	1520	2080	2450
	SH	M	BTU/h	3412	5186	7097	8359
			W	1130	1850	2250	2790
			W	770	1200	1540	1860
TH	L	W	1040	1540	1860	2190	
		W	630	920	1180	1410	
Heating capacity	H	W	1080	1620	2160	2700	
	M	W	780	1108	1574	1960	
	L	W	516	710	1120	1402	
Noise		High speed	dB(A)	43	45	46	47
Power input		High speed	W	37	50	62	73
Waterflow volume	High speed	Cooling coil	m <sup>3</sup> /h	0.23	0.35	0.46	0.58
		Heating coil		0.09	0.14	0.19	0.23
Pressure dropping	Cooling tube	kPa		20	20	20	20
	Heating tube			10	10	10	10
Water tube connection(inlet)			Cooling/heating tube	ZG3/4"	ZG3/4"	ZG3/4"	ZG3/4"
Water tube connection(outlet)			Cooling/heating tube	ZG1/2"	ZG1/2"	ZG1/2"	ZG1/2"
Exchanger			Type	Hydrophilic aluminum fin to wear copper tube			
Max.working pressure			MPa	1.6	1.6	1.6	1.6
Condensing water pipe			mm	φ 26	φ 26	φ 26	φ 26
Net dimension	Unit	L x W x H	mm	958 x 413 x 236			
	Panel			1044 x 468 x 31			
Net weight	Unit	kg		21	21	22	22
	Panel	kg		4			

1-way cassette FCU performance  
( 4 tube system )